



EP/C

AT THE BAY

EPIC LUXURY ON Curaçao's  
MOST *beautiful bay* WITH  
BREATHTAKING VIEWS

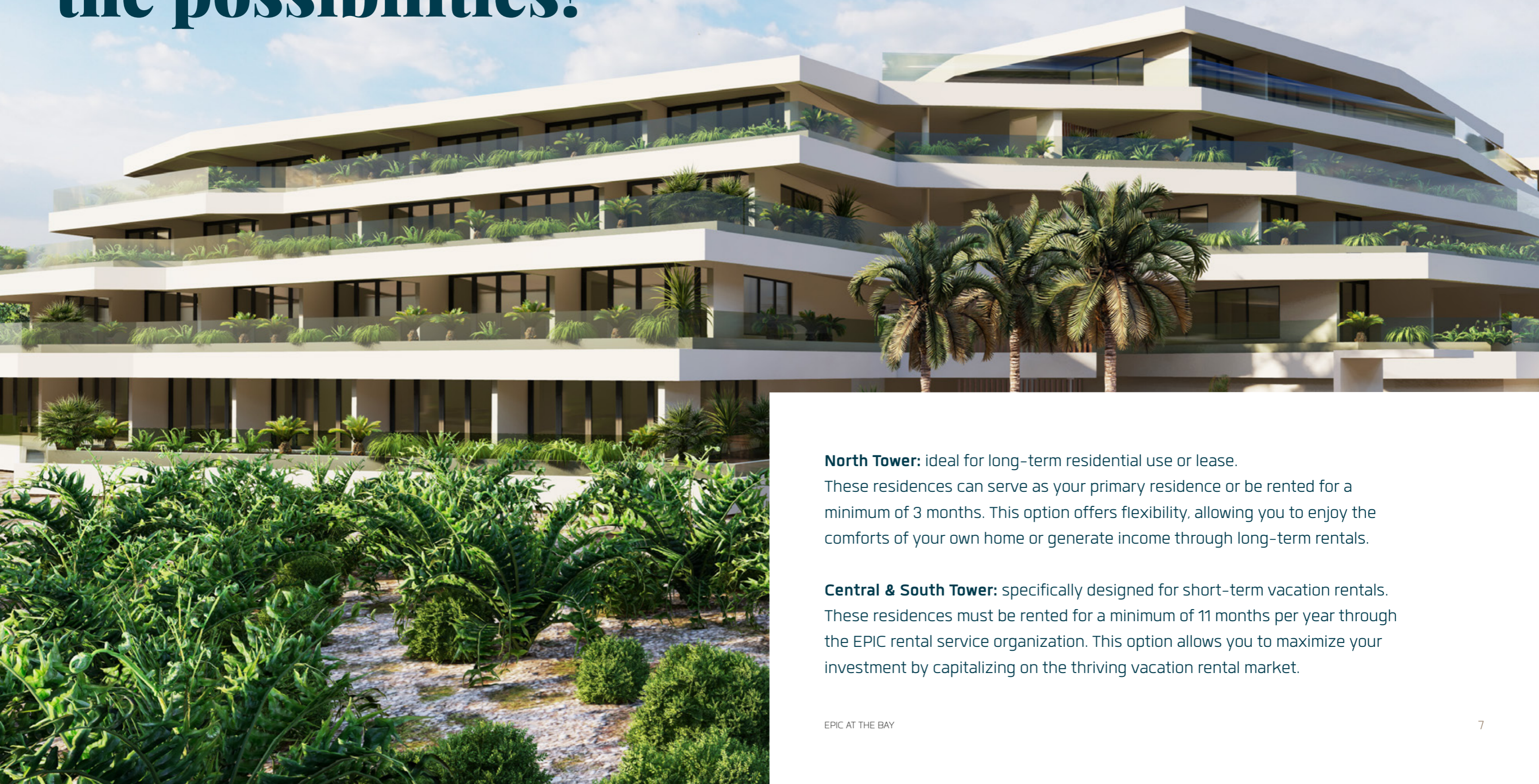




## **Welcome to** *EPIC at the bay*

A luxurious residential project located on the beautiful bay of Piscadera in Curaçao. Our project is comprised of 52 luxurious residences that offer panoramic views of the Caribbean Sea and sensational landscapes. You will be able to enjoy the breathtaking views of the Caribbean Sea from your own balcony.

# *Short-term rental or residential? Discover the possibilities!*



**North Tower:** ideal for long-term residential use or lease.

These residences can serve as your primary residence or be rented for a minimum of 3 months. This option offers flexibility, allowing you to enjoy the comforts of your own home or generate income through long-term rentals.

**Central & South Tower:** specifically designed for short-term vacation rentals.

These residences must be rented for a minimum of 11 months per year through the EPIC rental service organization. This option allows you to maximize your investment by capitalizing on the thriving vacation rental market.



## *exclusive* PRE-ASSEMBLED FURNITURE PACKAGES

Created in collaboration with renowned Dutch interior designer **Pieter Laureys from TKI**. These curated collections are designed to stylishly transform your space, catering specifically to the needs of short-term rentals. With thoughtfully arranged and carefully selected pieces, our packages offer a hassle-free solution for creating a beautiful and functional living environment. Immerse yourself in the ease and elegance of TKI's furniture collection, ensuring your short-term rental is visually appealing and effortlessly comfortable.



**WE STRIVE TO  
PROVIDE YOU WITH AN  
*EPIC experience* FROM  
THE MOMENT YOU STEP  
ONTO THE PREMISES**

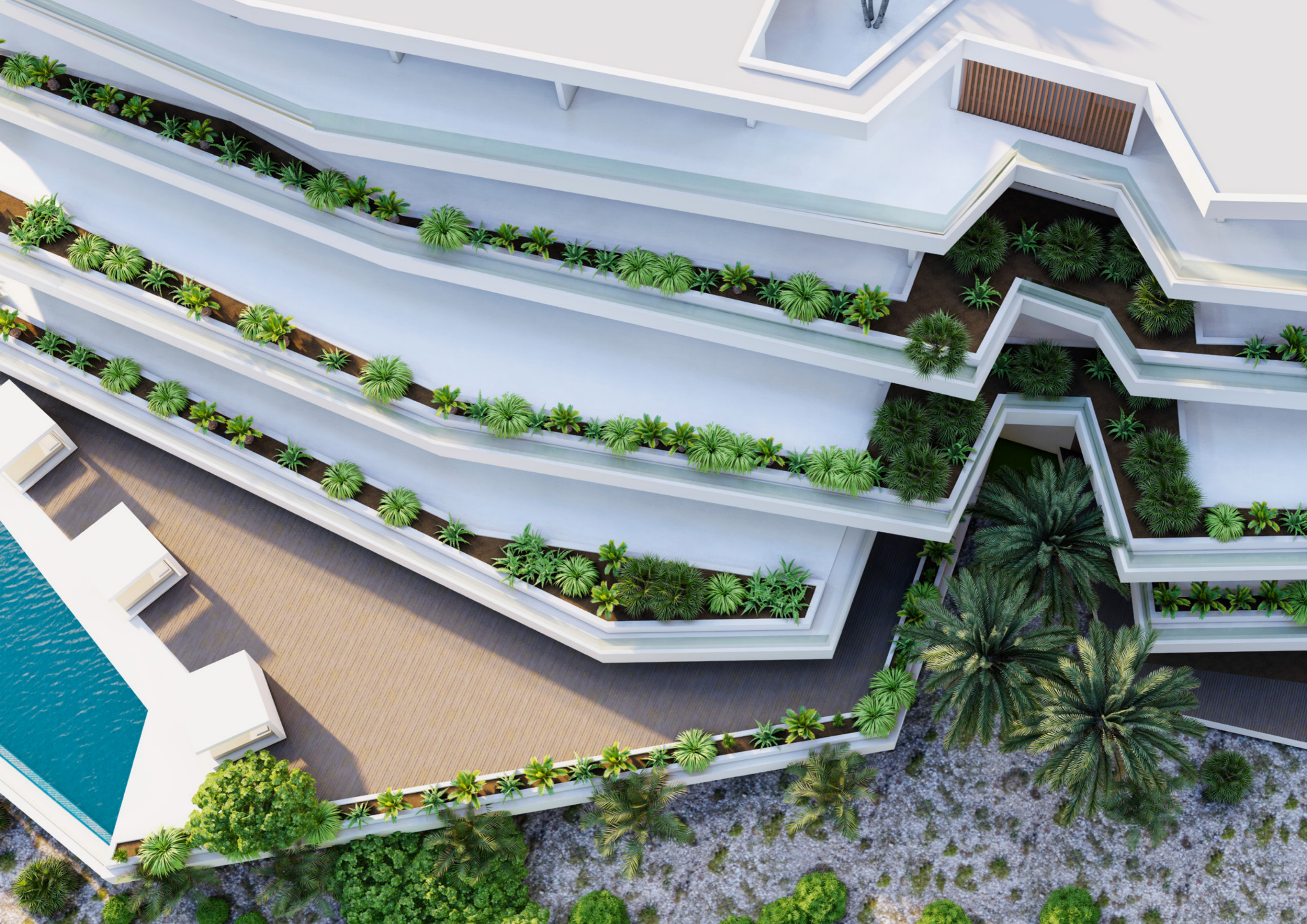
Our architect took inspiration from the beautiful environment surrounding the plot, and designed a building that radiates a sense of being on a luxurious ship sailing past a rugged tropical coastline.



# *Piscadera Bay*

Explore the beauty of Piscadera Bay with its white beaches and calm crystal clear waters, where you can easily step outside to enjoy fresh local seafood at De Visserij. The Pirate Bay beach club right beside offers full service lounge chairs, a cocktail bar and restaurant with great live music during the weekends. With its breathtaking setting, a natural bay, and very easy access to the city of Willemstad lying just 8 minutes away, there is plenty to do right at your doorstep!





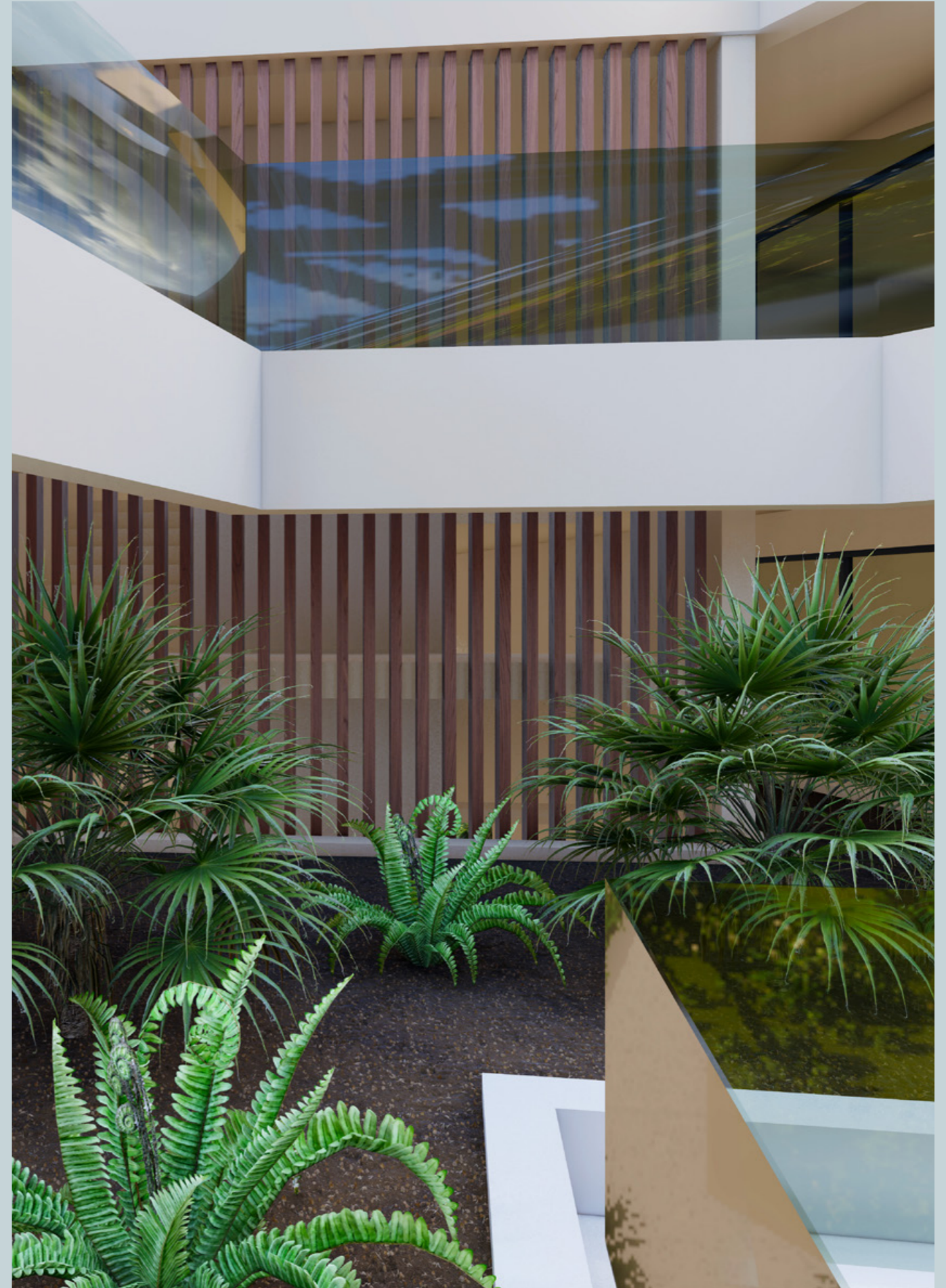


# EPIC BUILDING *with* MODERN INTERIORS *and* STUNNING SUNSET *terraces*

A total of 52 residences with three types of residences to choose from, single bedroom units, double bedroom units and a couple of penthouses.

An EPIC building with stylish interiors and turn key delivery of modern kitchen and bathrooms. The floor-to-ceiling windows and terraces bring in natural light, creating a bright and open feel. They also offer panoramic views, enhancing the building's allure.

All luxurious residences prioritize privacy and comfort. There will be two kinds of residences:





2-person  
**Residence**

**GFA**

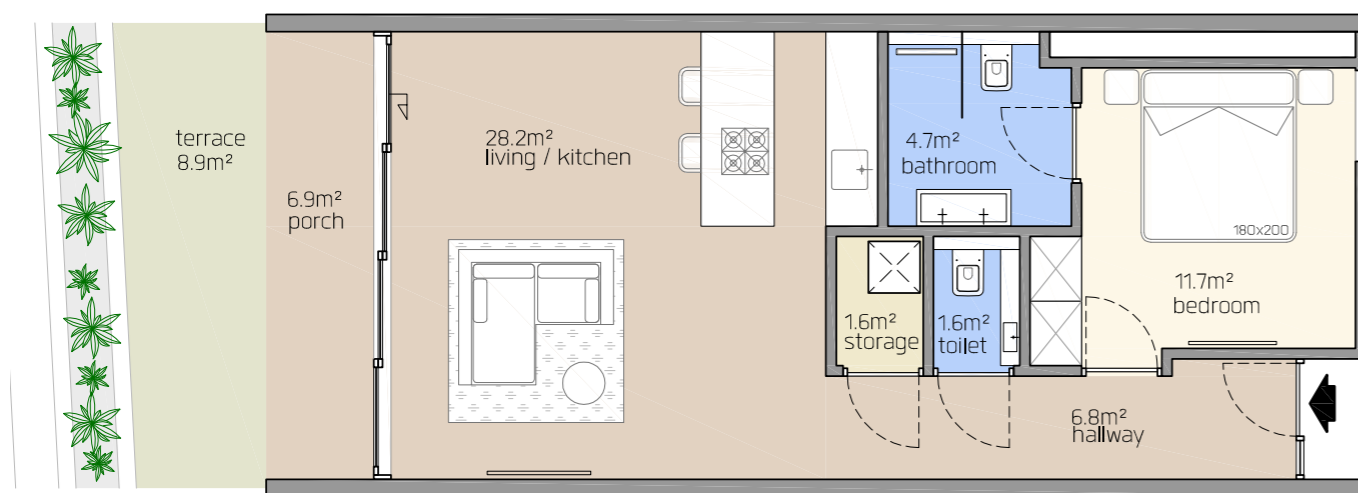
70m<sup>2</sup> (excluding terrace)

**Bedrooms**

1

**Bathrooms**

1.5







4-person  
**Residence**

**GFA**

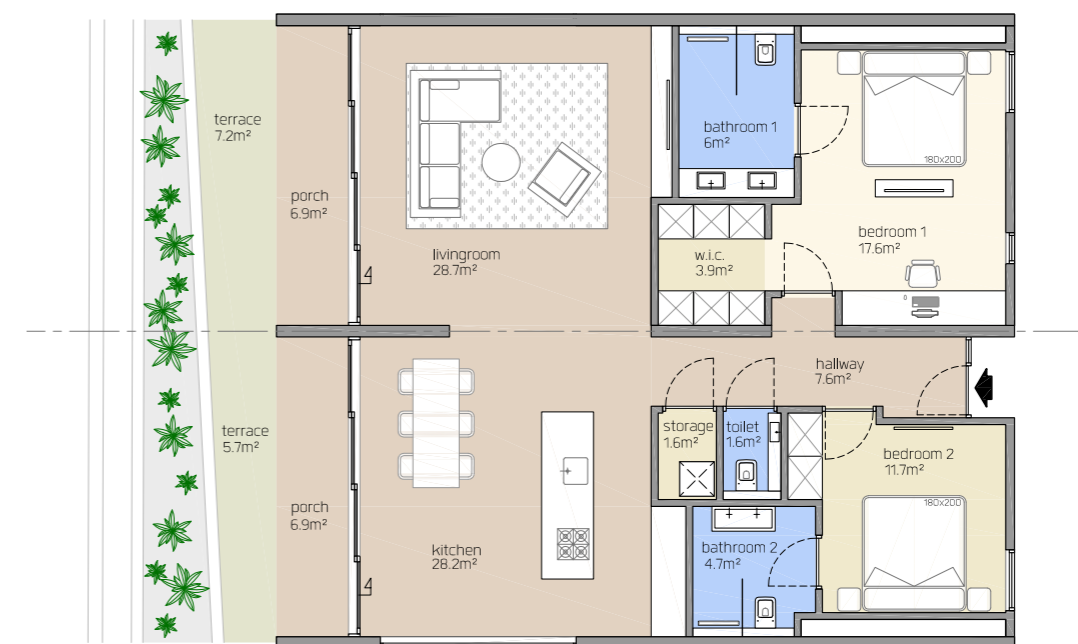
140m<sup>2</sup> (excluding terrace)

**Bedrooms**

2

**Bathrooms**

2.5





8-person  
**Residence** (*penthouse*)

**GFA**

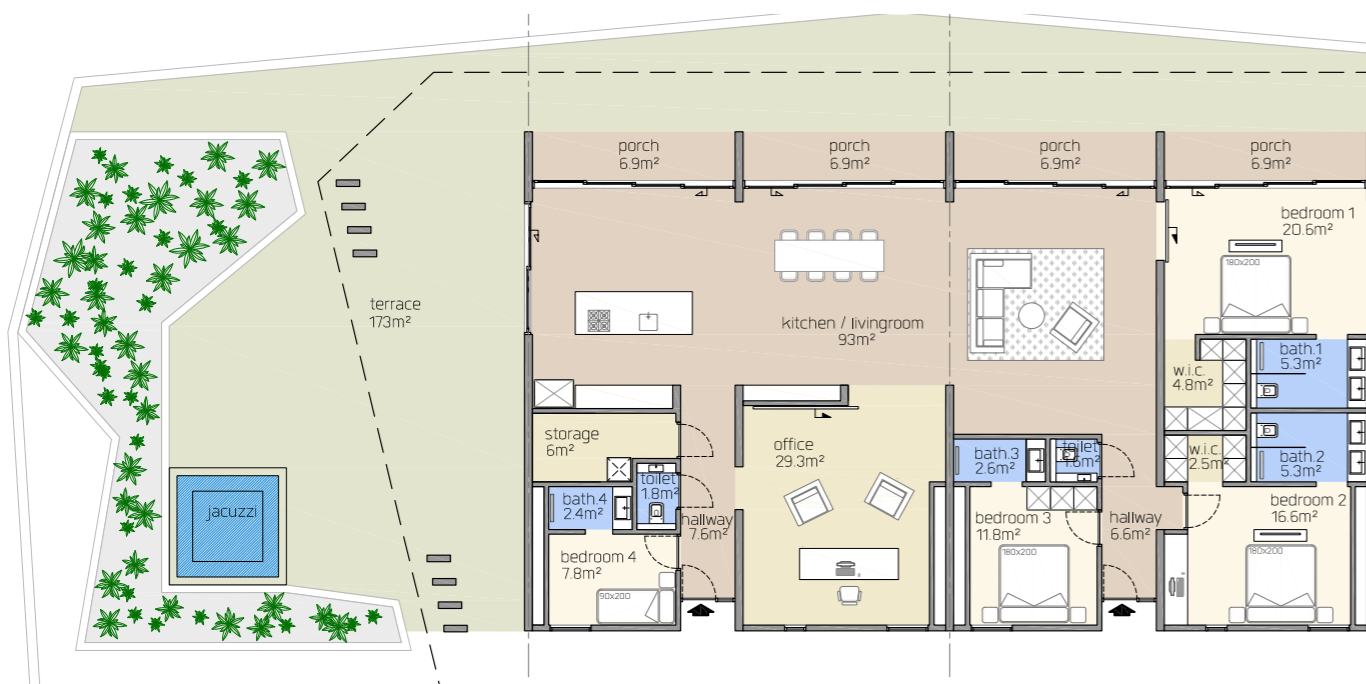
240m<sup>2</sup> (excluding terrace)

**Bedrooms**

4

**Bathrooms**

4









## FACTS & *Figures*

- The project includes 65 common parking spots and two elevators.
- There is a fitness center and a infinity edge pool with a sundeck and lounge beds.
- Short-term rentals are facilitated through a dedicated rental services organization operated by the developer.
- Additional storage rooms can be purchased as an option.
- Each residence features a rooftop EPIC Garden<sup>®</sup>, providing a unique garden experience.
- Floor-to-ceiling windows and private sunset terraces create a bright and open ambiance while providing panoramic views.
- The residences offer a modern interior and prioritize privacy and comfort.
- Possibility to acquire a storage unit.
- 24/7 staffed lobby.

Notes

EP/C

A T T H E B A Y

[epicatthebay.com](http://epicatthebay.com) | [info@epicatthebay.com](mailto:info@epicatthebay.com)

**Disclaimer:** This brochure has been carefully compiled. Please note that the final plan may differ from the displayed images, floor plans, and artist impressions. No rights can be derived from the content of this brochure. Typographical and printing errors are reserved.